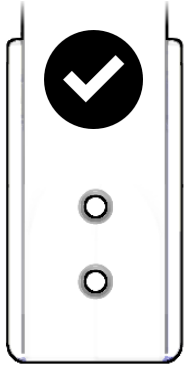


## About the AK-100

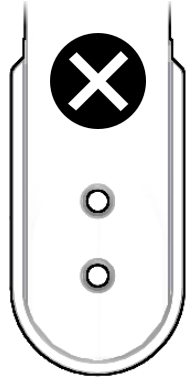
The AK-100 attaches to the Wimberley Sidekick's mounting base and serves two functions: it provides a dovetail width that more easily conforms to the limited clamping range of lever-style clamps, and also prevents the Sidekick from fully sliding out of a compatible quick-release clamp if the clamping mechanism should accidentally become loosened.

For Sidekick use with lever-style clamps, the AK-100 is mandatory, and it is highly recommended for use with traditional twist-knob clamps as well. If the face of your quick-release clamp has compatible safety stop grooves (clamps made by Wimberley, Really Right Stuff, Kirk, and others), the AK-100 stop screw should be installed to insure that the Sidekick does not accidentally slide out of your ball head's clamp.

**Note: Sidekicks produced after June 2018 DO NOT REQUIRE the AK-100 for lever-style clamp or lower safety stop use.** These Sidekicks have an integrated anodized dovetail plate which includes a safety stop. See below to identify which version you have. If you find that you purchased the AK-100 unnecessarily, please contact us to return the product and we will refund your purchase.



Older Sidekicks  
AK-100 Required



New Sidekick with integrated  
anodized dovetail plate  
AK-100 NOT REQUIRED

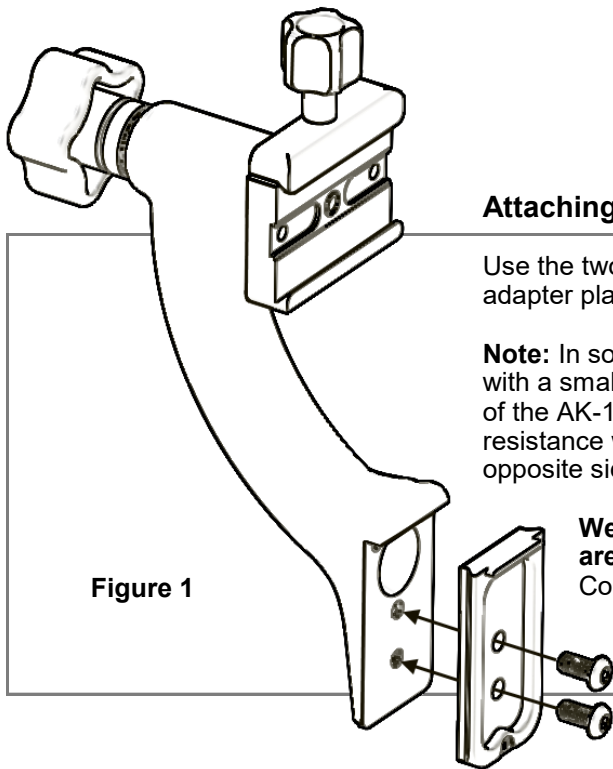


Figure 1

### Attaching the AK-100 Plate to your Sidekick:

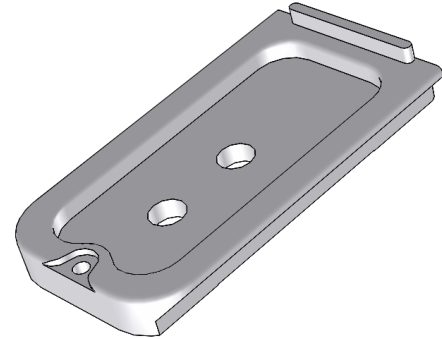
Use the two 1/4-20 button-head screws and their appropriate hex key to secure the adapter plate to your Sidekick as shown in Figure 1.

**Note:** In some cases, the threaded holes in the Sidekick casting are contaminated with a small amount of powder coating residue. This should not prohibit attachment of the AK-100, but it may make it more difficult to start the threads and create more resistance when tightening the fasteners. It may help to start the screws through the opposite side of the mounting area if you see paint inside the threads.

**We suggest that you take extra care to make sure that the fasteners are threading properly into the casting when starting the threads.** Contact us if you have difficulty attaching your AK-100 plate.

# Wimberley

## AK-100 Sidekick Safety Plate



Weight: 1.5 oz

Dimensions (L x W x H): 2.75" x 1.5" x 0.42"

Materials: Anodized 6061 Aluminum, stainless steel

### Package Contents:

- **Arca-Swiss Plate:** AK-100 Sidekick Safety Plate (Qty 1)
- **Mounting Screws:** 1/4-20 x 1/2" Button-Head Screw (Qty 2)
- **Safety Stop Screw:** M3 x 6mm (Qty 1)
- **Hex Key:** 5/32" (Qty 1)
- **Hex Key:** 2.5mm (Qty 1)

Made in USA

Wimberley, Inc.  
1750 Broadway St  
Charlottesville, VA  
22902 USA

Phone: 1-434-529-8385

Toll Free: 1-888-665-2746 (USA & Canada)

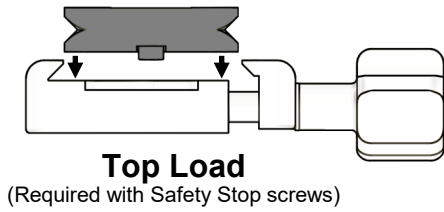
[www.tripodhead.com](http://www.tripodhead.com) [info@tripodhead.com](mailto:info@tripodhead.com)

10 Year Warranty – See [www.tripodhead.com/warranty.cfm](http://www.tripodhead.com/warranty.cfm) for complete details

Instructions continued on back >>

## — Using the Optional Safety-Stop Screws

Your Wimberley plate comes with one safety stop screw and a matching 2.5mm hex key. This screw is intended to be installed into the small threaded hole in the bottom of the plate (Fig. 2) to serve as a stop to prevent the sidekick from accidentally sliding out of the quick-release clamp. If you opt to use this safety feature, you must open the jaws of the quick-release clamp wide enough to load your sidekick from the side (instead of sliding it in).



Top Loading is less convenient, but you can be certain that your sidekick will not slide out of the clamp.

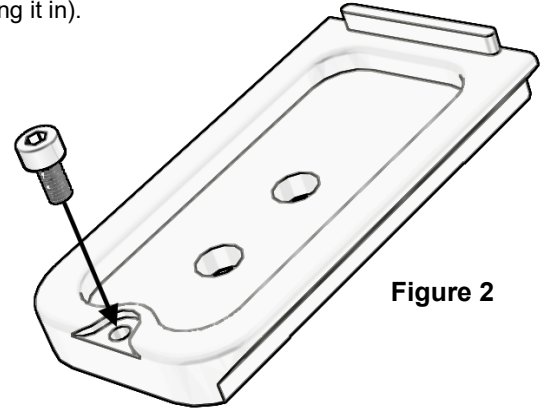
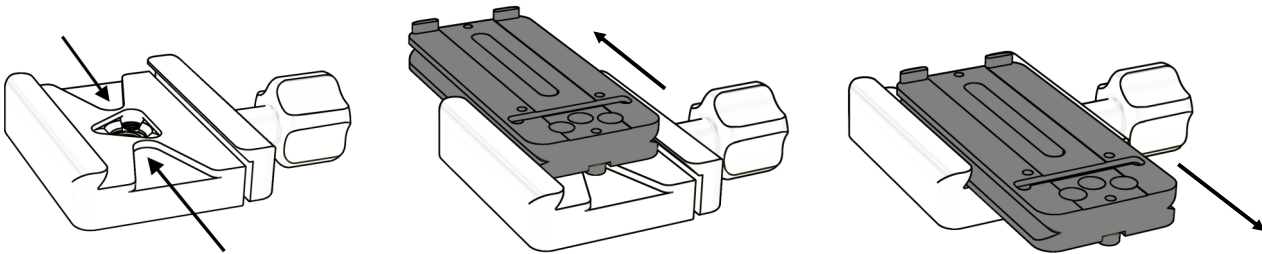


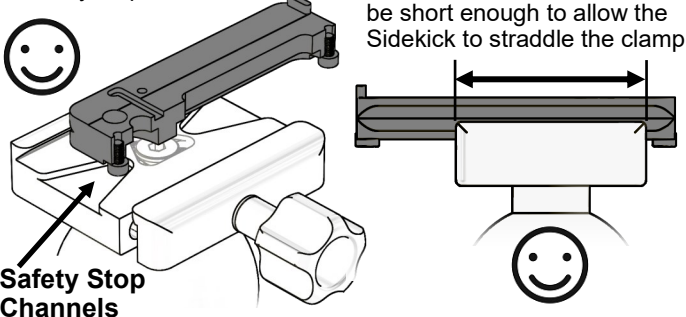
Figure 2

**Safety Stop Channels** We recommend using clamps with safety stop channels. These channels allow a full range of forward and backward motion but will not let the sidekick slip out if the clamp is inadvertently loosened.



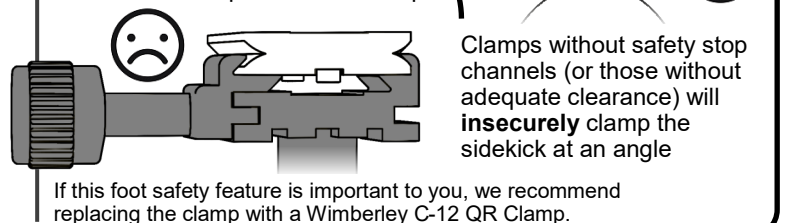
**⚠️ 3rd Party Clamp Warning:** Our safety stop screws work with most 3rd party quick-release clamps, but clamps that do not have channels and are too wide to be straddled by the safety stop screws will not work.

Your clamp must have safety stop channels **OR**



### Arca-Swiss Z1

The safety-stop security feature of this plate does not work when used with an Arca-Swiss "double-decker" quick-release clamp.



Thank you for your interest in Wimberley products. If you have any questions or comments please feel free to contact us.